



An automated predictive datamining tool

Teradata ODBC Setup v1.01

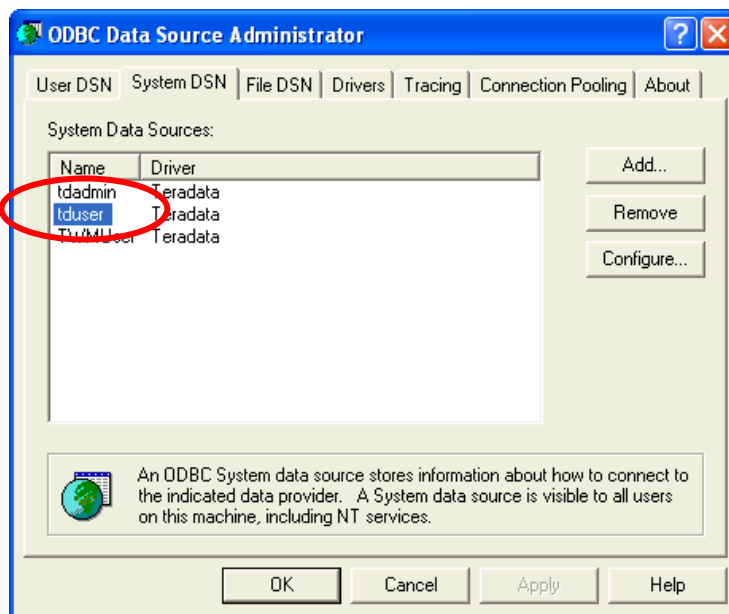
Creation Date: November 2013

Last Edited: November 2013

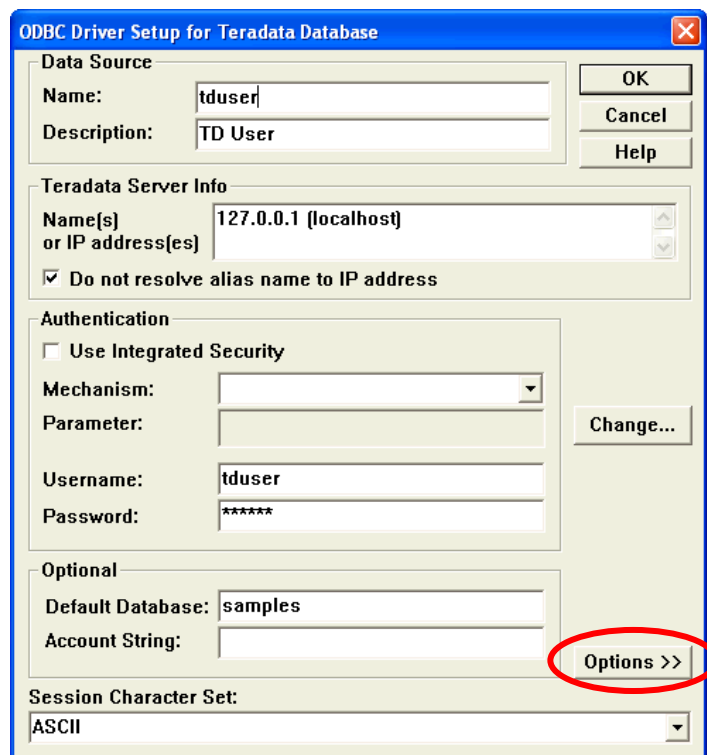


1. Teradata ODBC setup

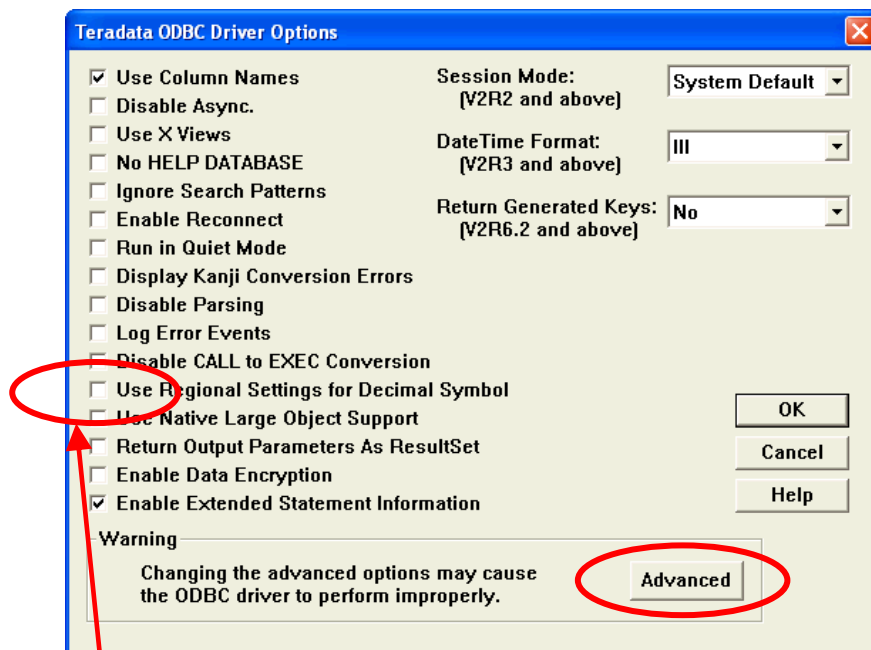
Open the “Microsoft ODBC Data Source Administrator” and double-click on the ODBC link that you want to configure. In this example, we’ll configure the ODBC link named “tduser”:



The “ODBC Driver Setup for Teradata Database” window opens:



In the above window, when you click the “Options >>” button, the “Teradata ODBC Driver Options” window opens:



Anatella expects the decimal separator for numbers to be the dot (“.”) whatever the Regional Settings inside the server are. Thus, you need to uncheck the option named “Use Regional Settings for Decimal Symbol”

When you click the “Advanced” button in the above window, the “Teradata ODBC Driver Advanced Options” window opens. Change the parameter named “Maximum Response Buffer Size” to 65.000 (instead of the default value: 8.192). This will allow better network performances during communication exchanges between TIMi/Anatella/Stardust and the Teradata database.

