



An automated predictive datamining tool

Network License v1.03

Creation date: June 2013
Last updated: March 2015



Network License

A TIMi network license is required when:

- You want to run TIMi on a server inside a **Virtual Machine** (VMWare).
- You don't want to attach your TIMi license to a specific server (i.e. to a specific hardware ID).

How does the Network Licence works?

When the "license.xml" file is present, TIMi (or Anatella or Stardust) connects to the *Business-Insight Web Authentication Server* to verify that your login is not expired. The authentication server matches your login against a database of known login, it checks the expiration date of your login and, if everything is ok, it returns an "OK token" to the local server running TIMi (or Anatella or Stardust). The "OK Token" is valid for 1 day (i.e. it means that TIMi makes one very small web connection per day). All this procedure is completely transparent and very fast (the access to the authentication server takes less than one tenth of a second).

What are the license servers?

There are currently 2 license servers:

- <http://www.business-insight.com>
- <http://www.actionalytics.com>

If one license server is down, TIMi automatically switches to the other one.

Where are my credential stored?

Your login (as well as the list of license servers) is inside a file name "license.xml".

Here is the content of a typical "license.xml" file:

```
<LICENSE>
<CONNECTIONOPTION></CONNECTIONOPTION>
<SERVER1>http://www.business-insight.com/checklicense.php</SERVER1>
<SERVER2>http://www.actionalytics.com/checklicense.php</SERVER2>
<USER>MY_LOGIN</USER>
</LICENSE>
```

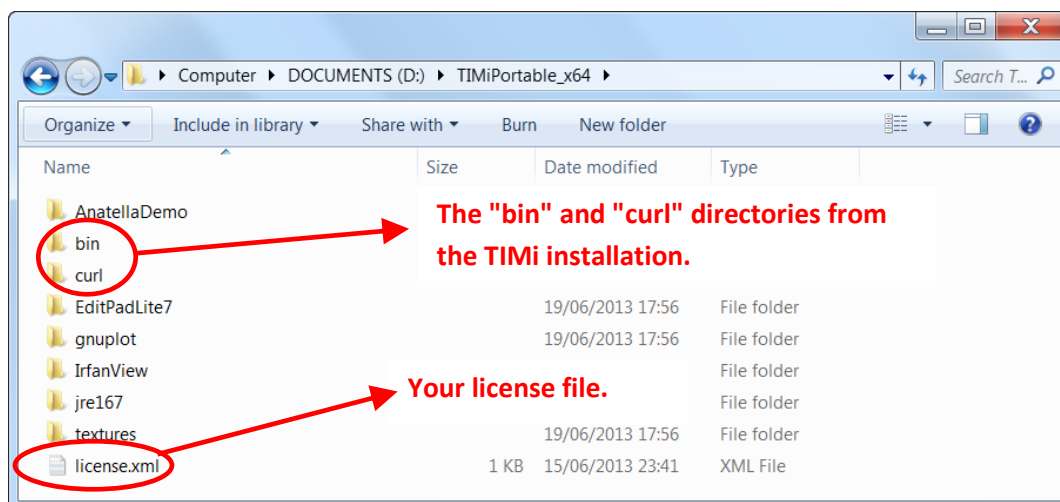
Your login is here.

How do I install TIMi with a network license?

To use the network licence, copy the file "license.xml" inside the root of your "TIMi Suite" installation. Typically, the TIMi root directory is "C:\Program Files\TIMi".

At the end, you should have something like this:





This does not work. Help!

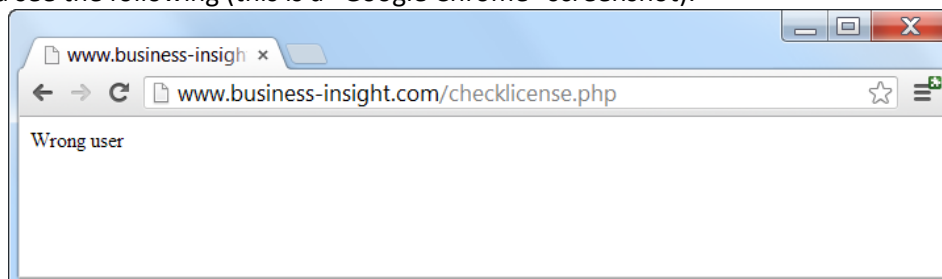
TIMi refuses to run although I installed my personal “license.xml” inside the right directory.

Most of the time, this is caused by a firewall that prevents TIMi to access the license server.

First, check if you can access the license server using a standard browser (i.e. chrome, firefox, Internet Explorer, etc.). Enter the following URL:

<http://www.business-insight.com/checklicense.php>

You should see the following (this is a “Google Chrome” screenshot):



If you cannot see the “Wrong user” message, it means that you have no internet connection (and thus, you can’t connect to the license server). Please restore internet connectivity.

Second, check if you can access the license server using the “curl.exe” executable located inside the “<TIMi root directory>\curl” directory (All network transfers that are executed by TIMi/Anatella/Stardust are using the “curl.exe” executable). Open a command-prompt (i.e. run “cmd”), go to the directory containing curl and type:

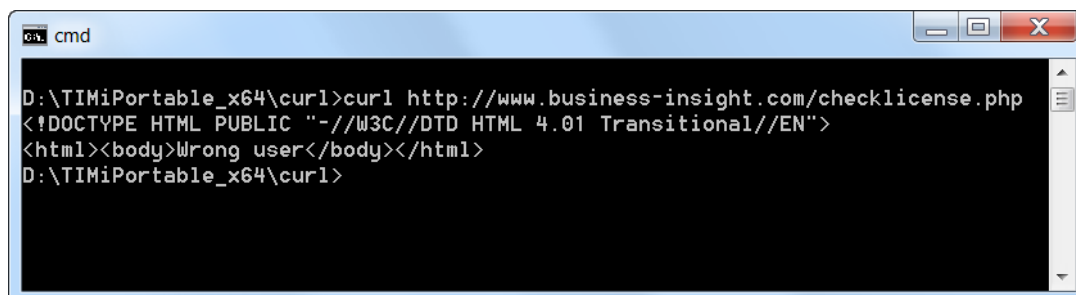
```
curl http://www.business-insight.com/checklicense.php
```

or (to use port 445):

```
curl -k https://www.business-insight.com/checklicense.php
```



You should see the following as response:



```

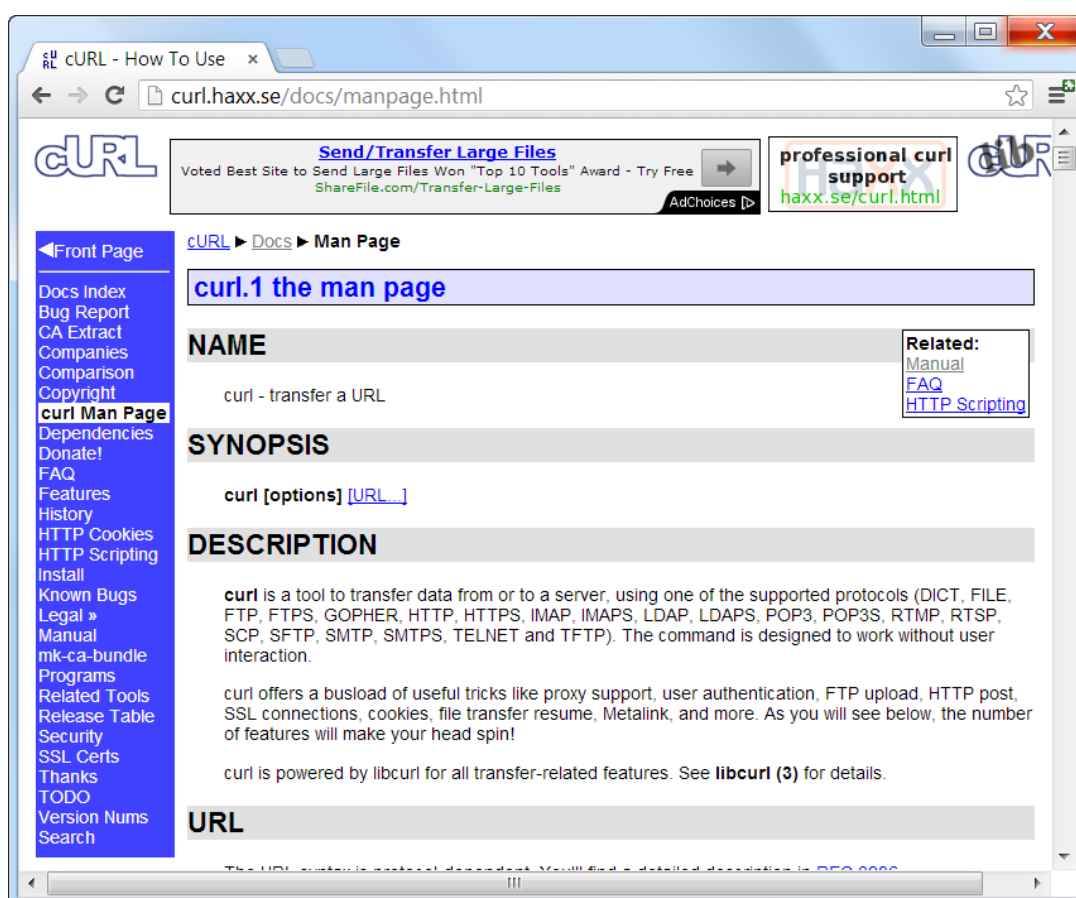
cmd
D:\TIMiPortable_x64\curl>curl http://www.business-insight.com/checklicense.php
<!DOCTYPE HTML PUBLIC "-//W3C//DTD HTML 4.01 Transitional//EN">
<html><body>Wrong user</body></html>
D:\TIMiPortable_x64\curl>

```

If you can't see the "`<!DOCTYPE HTML PUBLIC "-//W3C//DTD HTML 4.01 Transitional//EN">`" message, it means that you need some special parameters to access internet (Most certainly, you need to configure a proxy server).

You now need to:

- Refer to your system administrator to obtain the set of parameters required to access the internet (Typically: you need the "proxy server settings").
 - Refer to the curl documentation to find the right command-line parameters to give to curl to access the internet. Type "`curl --help`" for a brief help on command-line parameters or refer to this webpage for more information: <http://curl.haxx.se/docs/manpage.html>
- Here is a screenshot of this webpage :



Most of the time you need to add the proxy connection parameter: i.e. You need to add the following curl parameter:

```
--proxy userlogin:password@proxyhost:port
```

Once, you have found the right curl command-line parameters, you are almost done! ☺ All you still need to do is copy/paste the curl command-line parameters into your "license.xml" file. Here are two examples:

- if you need to type the following to access the license server:

```
curl --proxy userlogin:password@proxyhost:1080 http://www.business-insight.com/checklicense.php
```

...then, you'll have the following "license.xml" file:

```
<LICENSE>
<CONNECTIONOPTION> --proxy userlogin:password@proxyhost:1080 </CONNECTIONOPTION>
<SERVER1>http://www.business-insight.com/checklicense.php</SERVER1>
<SERVER2>http://www.applied-mathematics.net/checklicense.php</SERVER2>
<USER> MYLOGIN </USER>
</LICENSE>
```

The extra command-line parameters for curl.

- if you need to type the following to access the license server (using port 445):

```
curl -k --proxy userlogin:password@proxyhost:1080
https://www.business-insight.com/checklicense.php
```

...then, you'll have the following "license.xml" file:

```
<LICENSE>
<CONNECTIONOPTION>-k --proxy userlogin:password@proxyhost:1080 </CONNECTIONOPTION>
<SERVER1>https://www.actionalytics.com/checklicense.php</SERVER1>
<SERVER2>https://www.business-insight.com/checklicense.php</SERVER2>
<USER>MYLOGIN </USER>
</LICENSE>
```

