



## License Guide

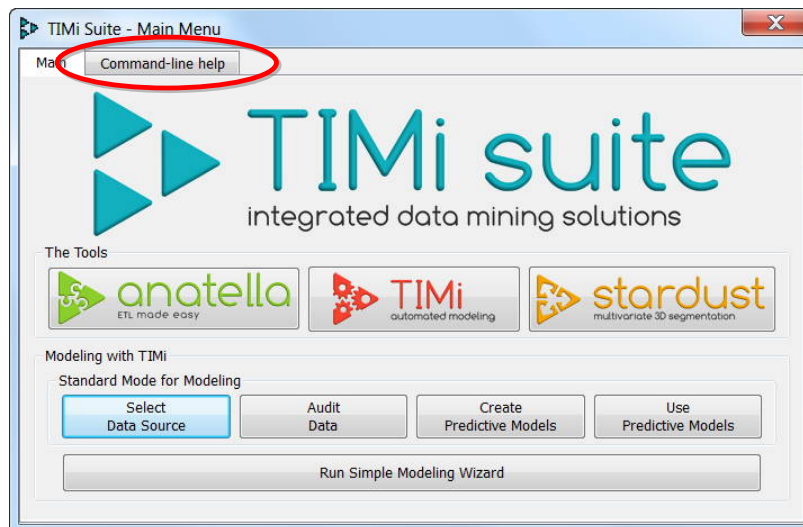
Welcome to the “License guide” to **The Intelligent Mining Machine** (TIMi)!

This document will guide you through the process of getting a “Serial Number” to unlock the “TIMi Suite” for a longer trial period (or throughout the entire duration of your contract).

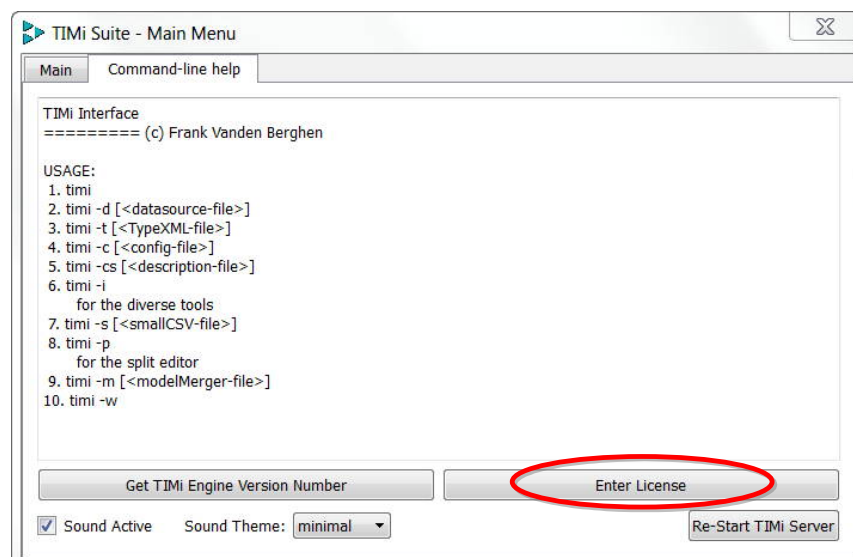
To obtain a “Serial Number”, you must first send the “Hardware-ID” of your computer/workstation to a TIMi sales-representative. To get your “Hardware-ID”, double-click on the TIMi Suite icon:



The “TIMi Suite – Main Window” appears. Click on the “Command-Line Help” Tab, as illustrated below:



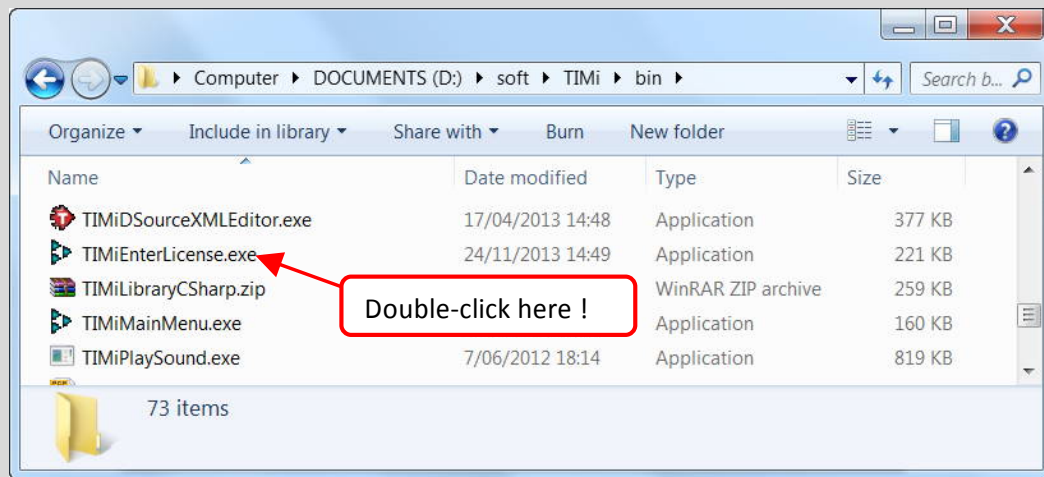
... then click on the “Enter License” button, as illustrated below:



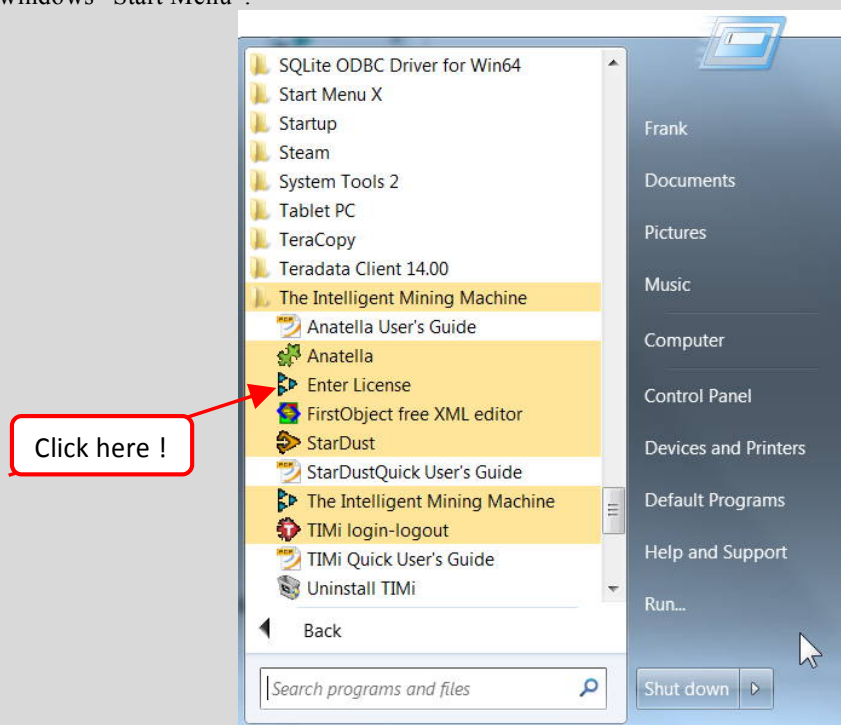
The “*TIMi License Information*” window should now appear.



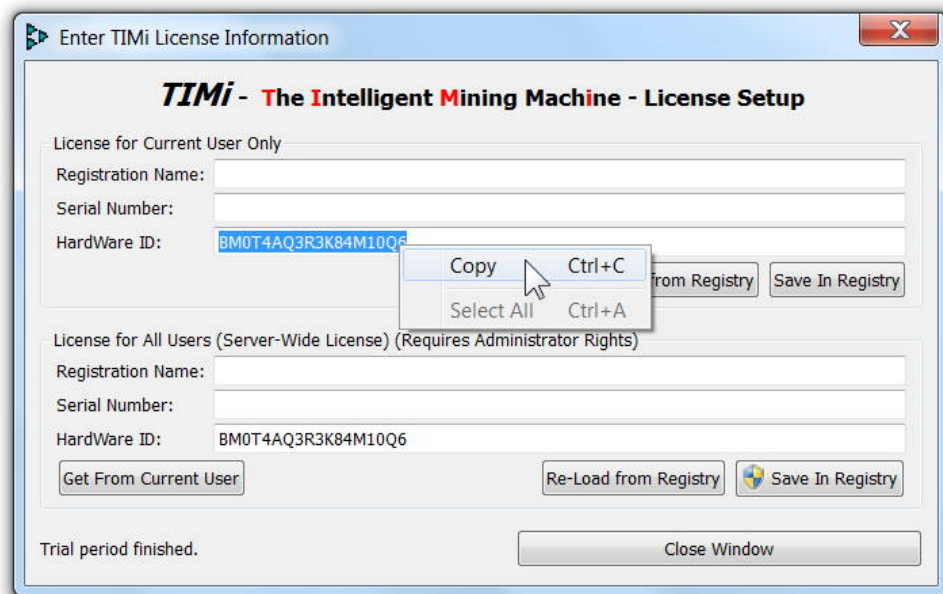
An alternative method to open the “*TIMi License Information*” window is to run the “TIMiEnterLicense.exe” executable inside the subdirectory “bin” inside the TIMi installation directory (Typically, you’ll run the file “C:\Program Files\TIMi\bin\TIMiEnterLicense.exe”):



An alternative method to open the “*TIMi License Information*” window is to run it directly from the windows “Start Menu”:

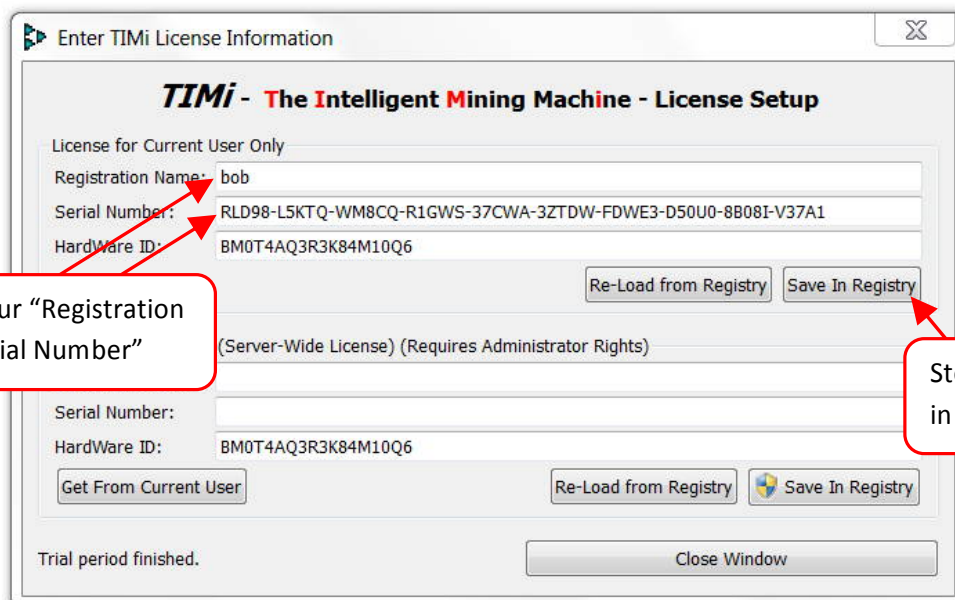


The following “TIMi License Information” window should now be visible:



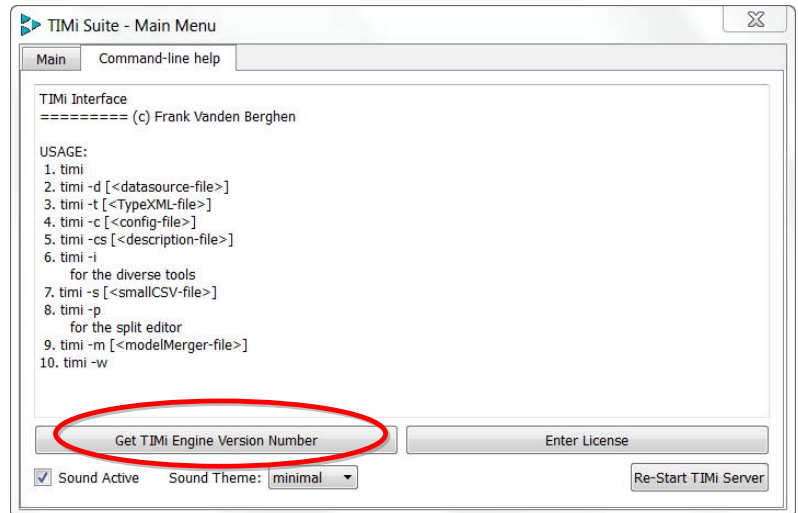
Please Note your Hardware-ID (you can use copy/paste) (in the example above, it is “BM0T4AQ3R3K84M10Q6”) and send it to [sales@business-insight.com](mailto:sales@business-insight.com) (or any other representative of the TIMi software) (You can copy/paste your Hardware-ID directly inside the e-mail).

The TIMi sales-representative will send you back an e-mail that contains your license information (i.e. the Registration Name and the Serial Number). At this point, go back to the “License Information Window” and simply enter your “Registration Name” and “Serial Number” as given in your e-mail: see the illustration below:

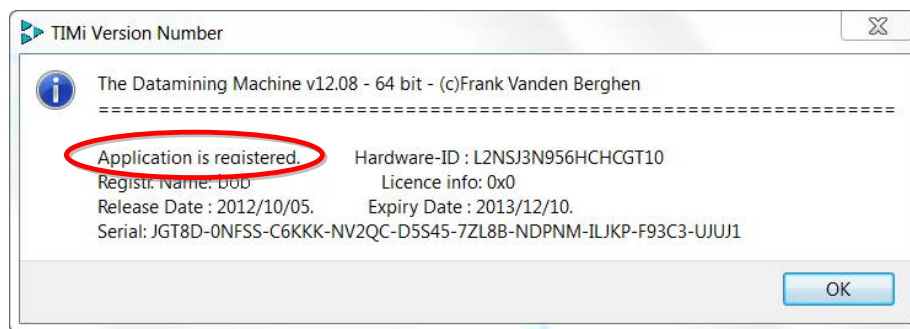


Once the information is entered, click the “Save in Registry” button.

To test if your license information is entered correctly, click the “Get TIMi Engine Version Number” button:



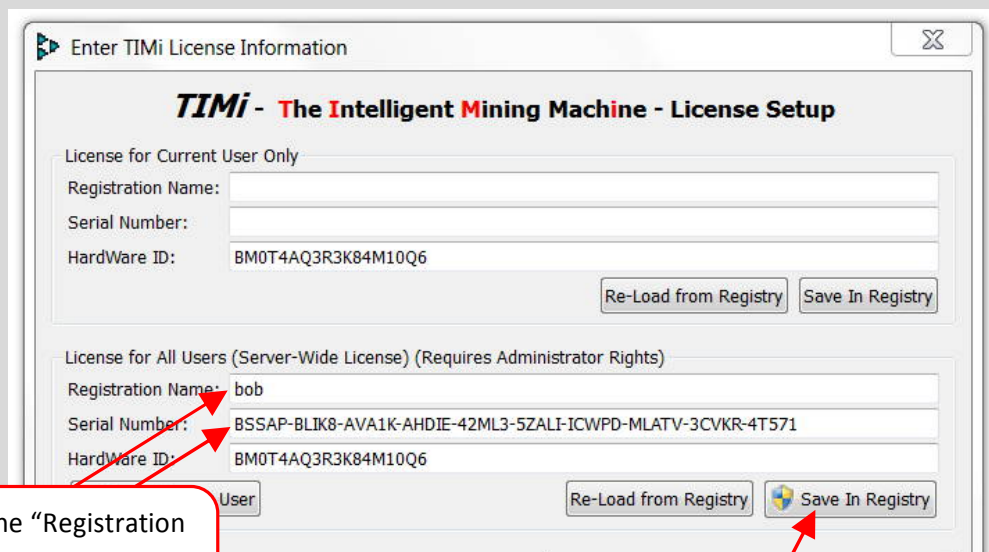
You should see the following window:



Each different user using TIMi on the server has to enter by itself the “Registration Name” and the “Serial Number” (Everybody can use the same “Registration Name” and “Serial Number” but it must be encoded one time by each user).

If there are many different users on the server, it might be simpler to enter only one time the “Registration Name” and the “Serial Number” **for all the users**. This option is unfortunately only accessible if you have administrative rights on your machine.

To enter the “Registration Name” and the “Serial Number” for all the users:



Step 1: Enter the “Registration Name” and “Serial Number” for all users.

Step 2: click the “Save in Registry” button (...when Windows asks for administrative privileges, say “yes”).